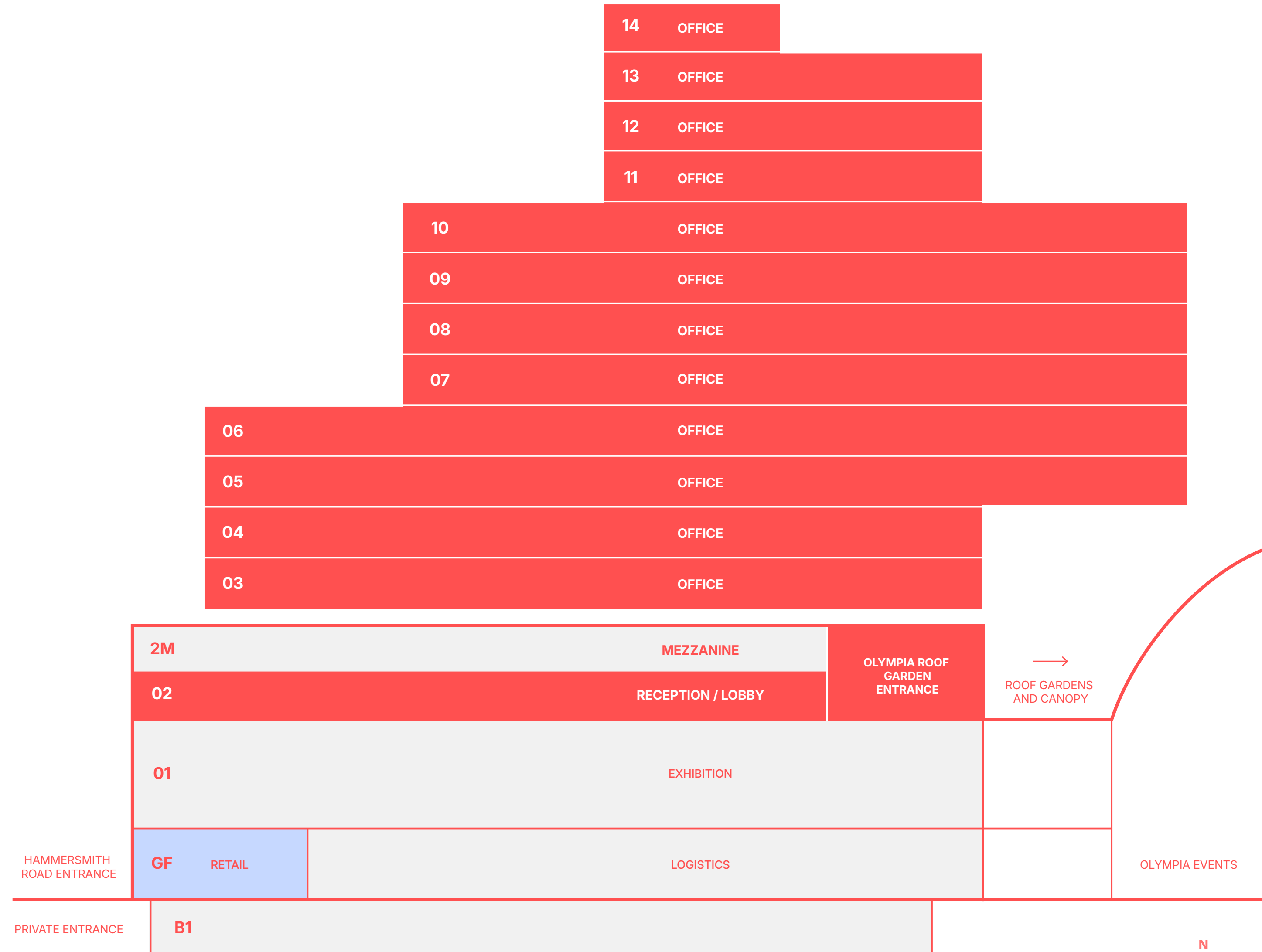


ONE
OLYMPIA

FLOORPLANS



FLOOR	OFFICES SQ FT	TERRACE SQ FT	COMMUNAL AMENITIES SQ FT
14	4,618	16,490	
13	27,760		
12	27,739		
11	27,739	32,064	
10	57,727		
09	57,705	646	
08	57,006		
07	57,006	17,136	
06	73,152		
05	73,152	646	
04	60,472		
03	6,609		38,000
02M			16,925
02			23,400

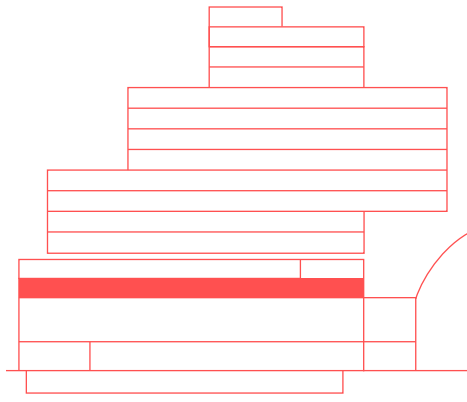


Schedule Of Area

*Approx NIA areas



Level 02



ONE OLYMPIA

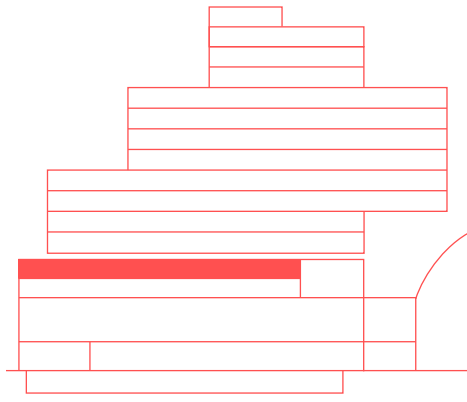
COMMUNAL AMENITIES 23,400 SQ FT



- OFFICE
- COMMUNAL AMENITIES
- FOOD & BEVERAGE



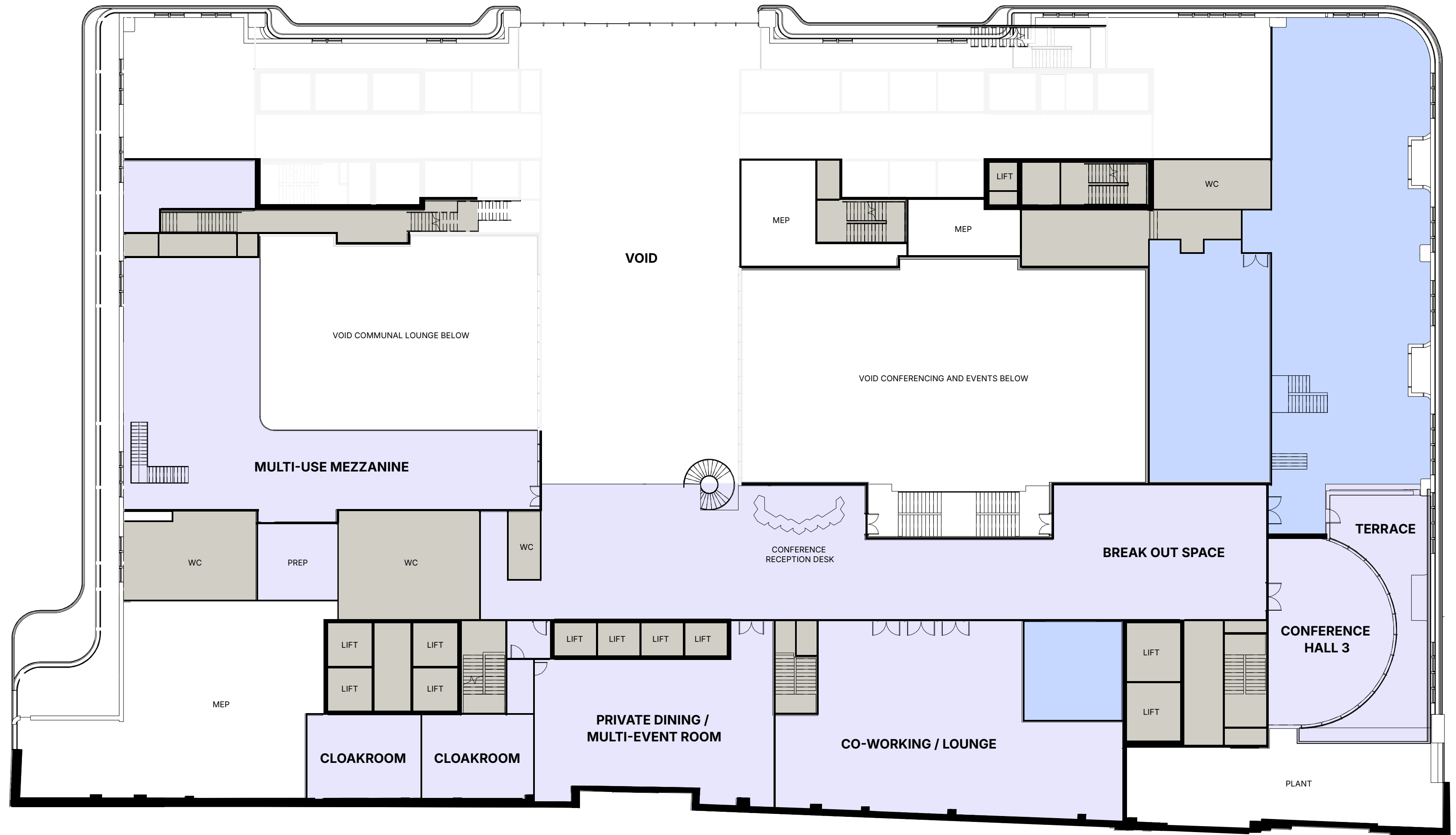
Level 02M



ONE OLYMPIA

CONFERRING AND EVENTS 16,925 SQ FT

FOOD & BEVERAGE 6,070 SQ FT

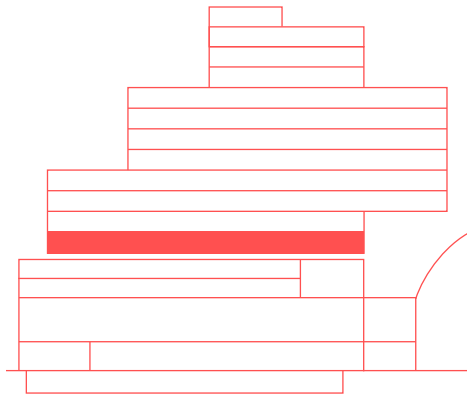


COMMUNAL AMENITIES

FOOD & BEVERAGE



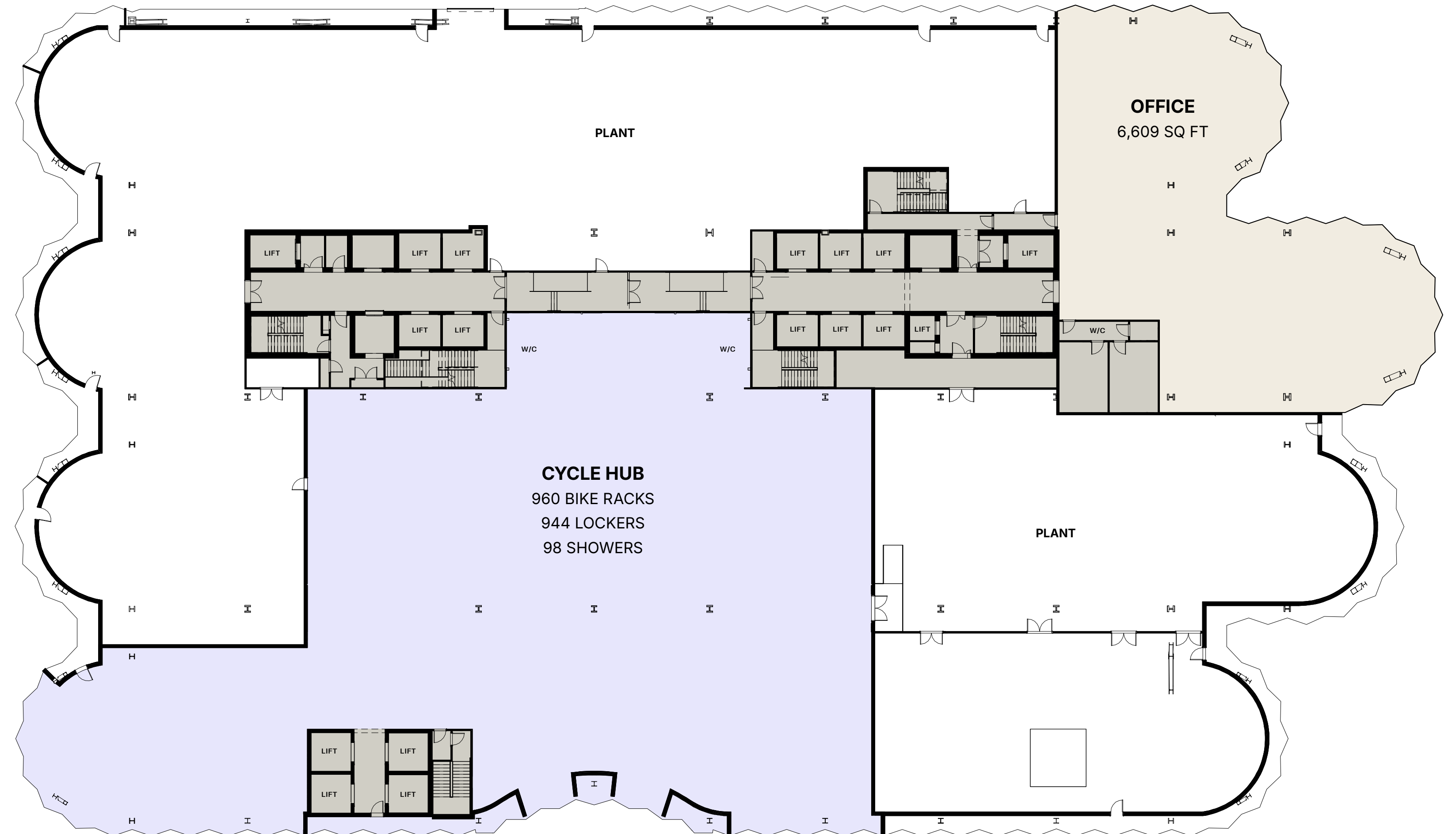
Level 03



ONE OLYMPIA

OFFICE SPACE 6,609 SQ FT

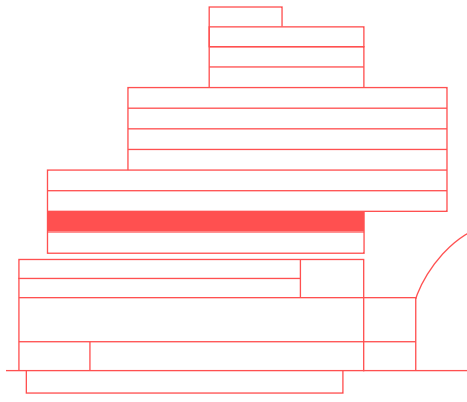
CYCLE HUB 38,000 SQ FT



OFFICE

COMMUNAL AMENITIES

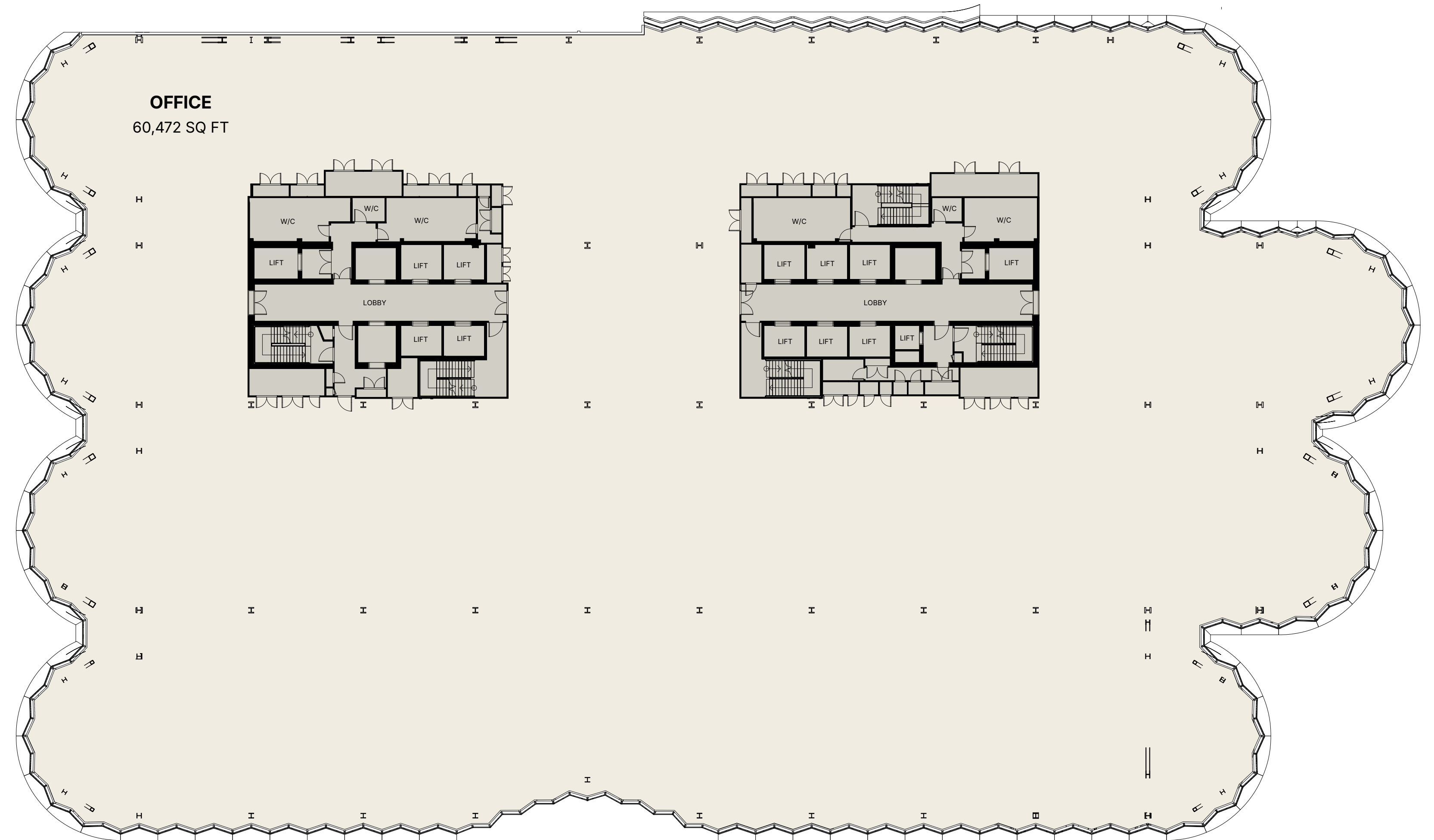
Level 04



ONE OLYMPIA

OFFICE SPACE

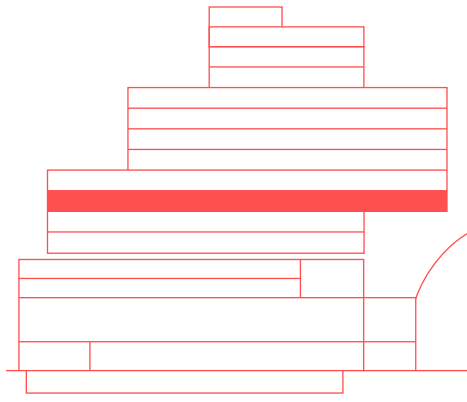
60,472 SQ FT



OFFICE



Level 05

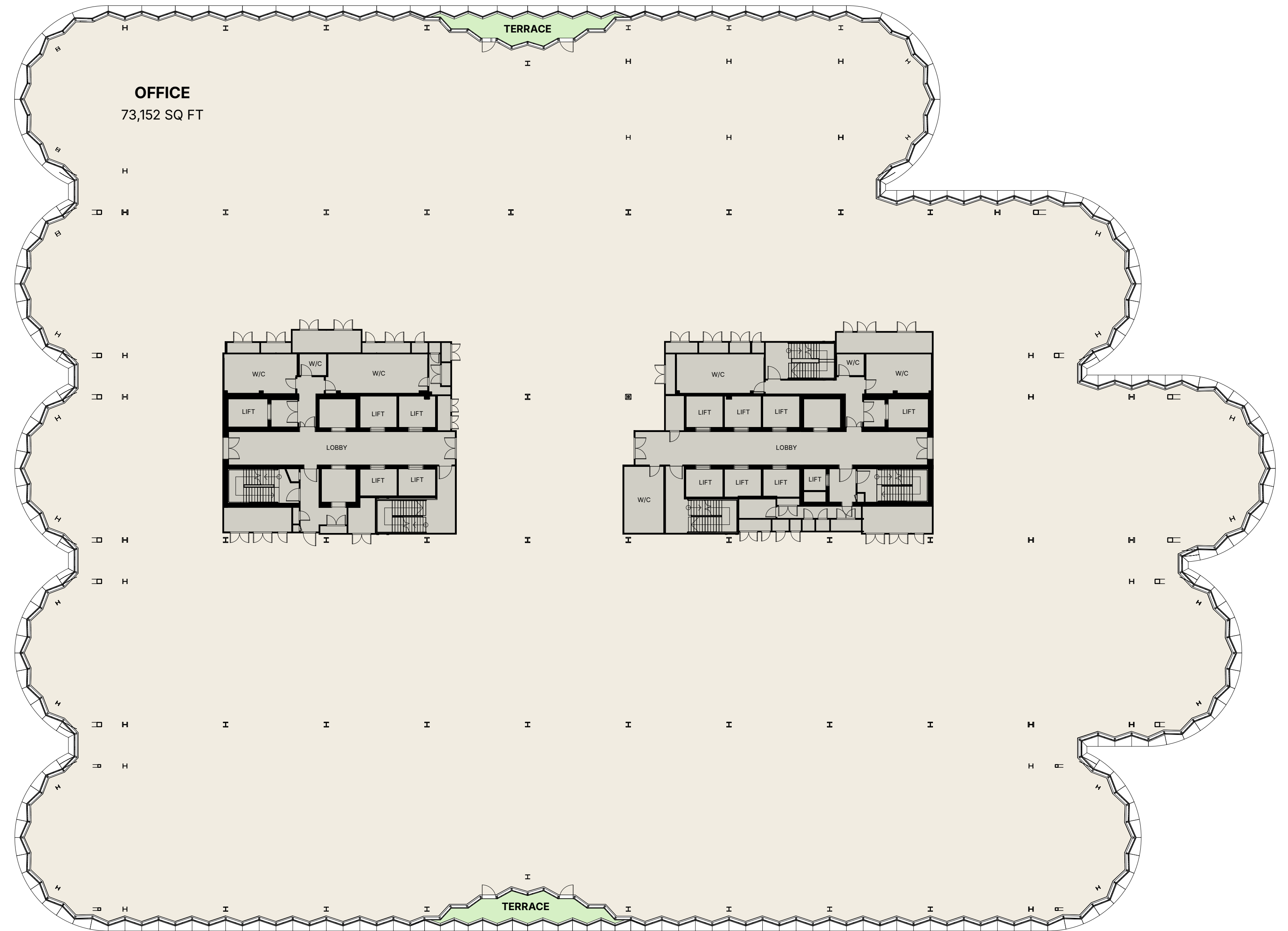


ONE OLYMPIA

OFFICE SPACE 73,152 SQ FT

TERRACE 646 S FT

UNDER OFFER

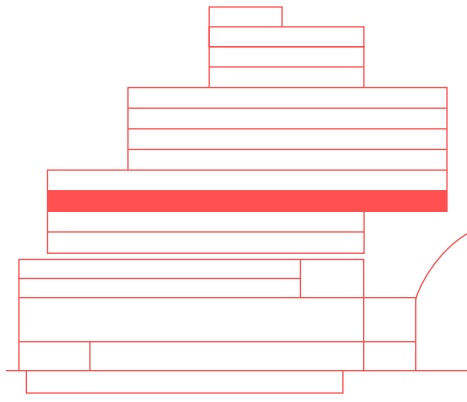


OFFICE

TERRACE



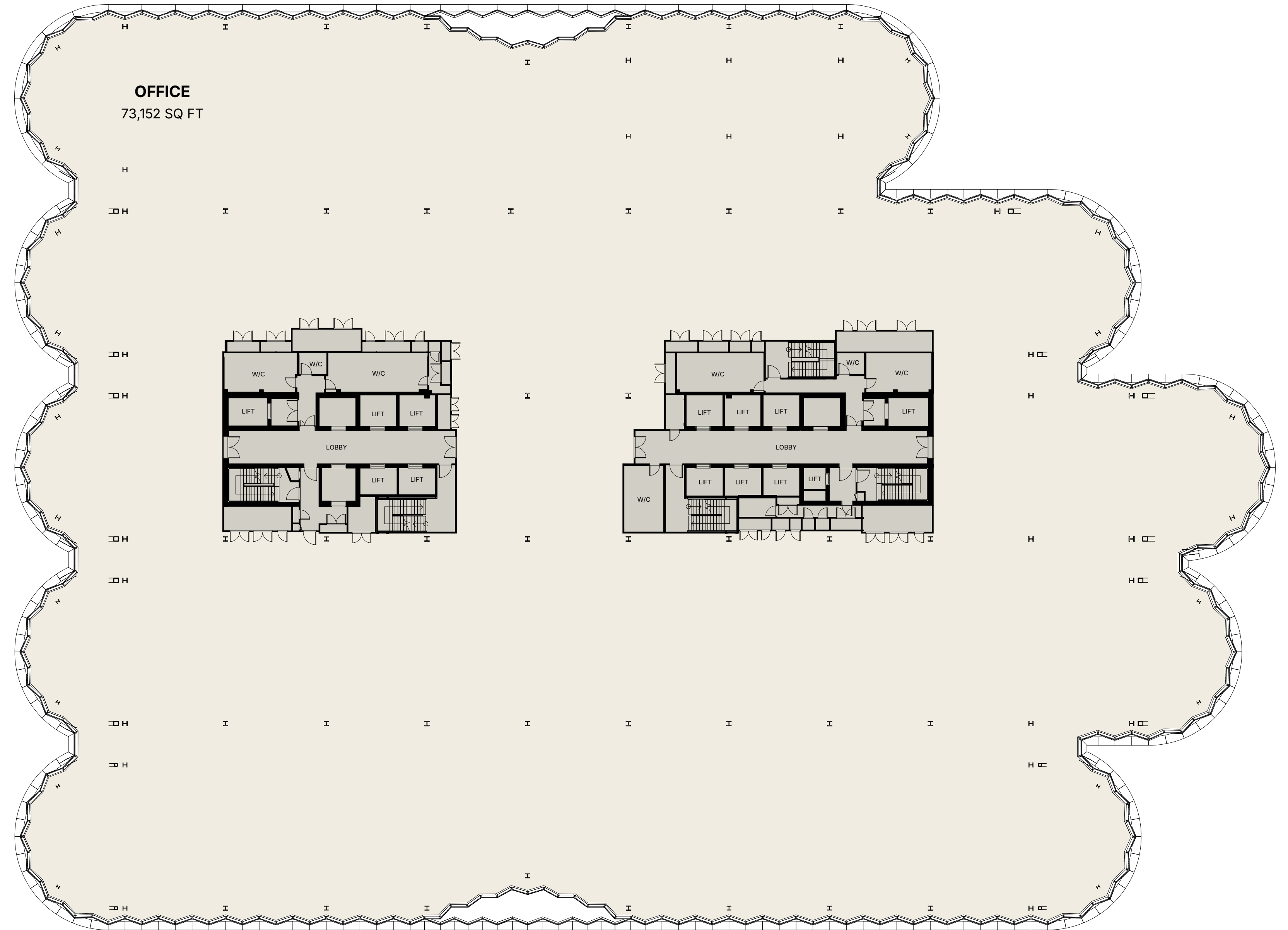
Level 06



ONE OLYMPIA

OFFICE SPACE

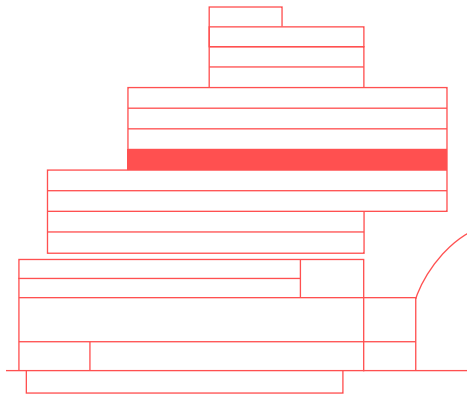
73,152 SQ FT



OFFICE



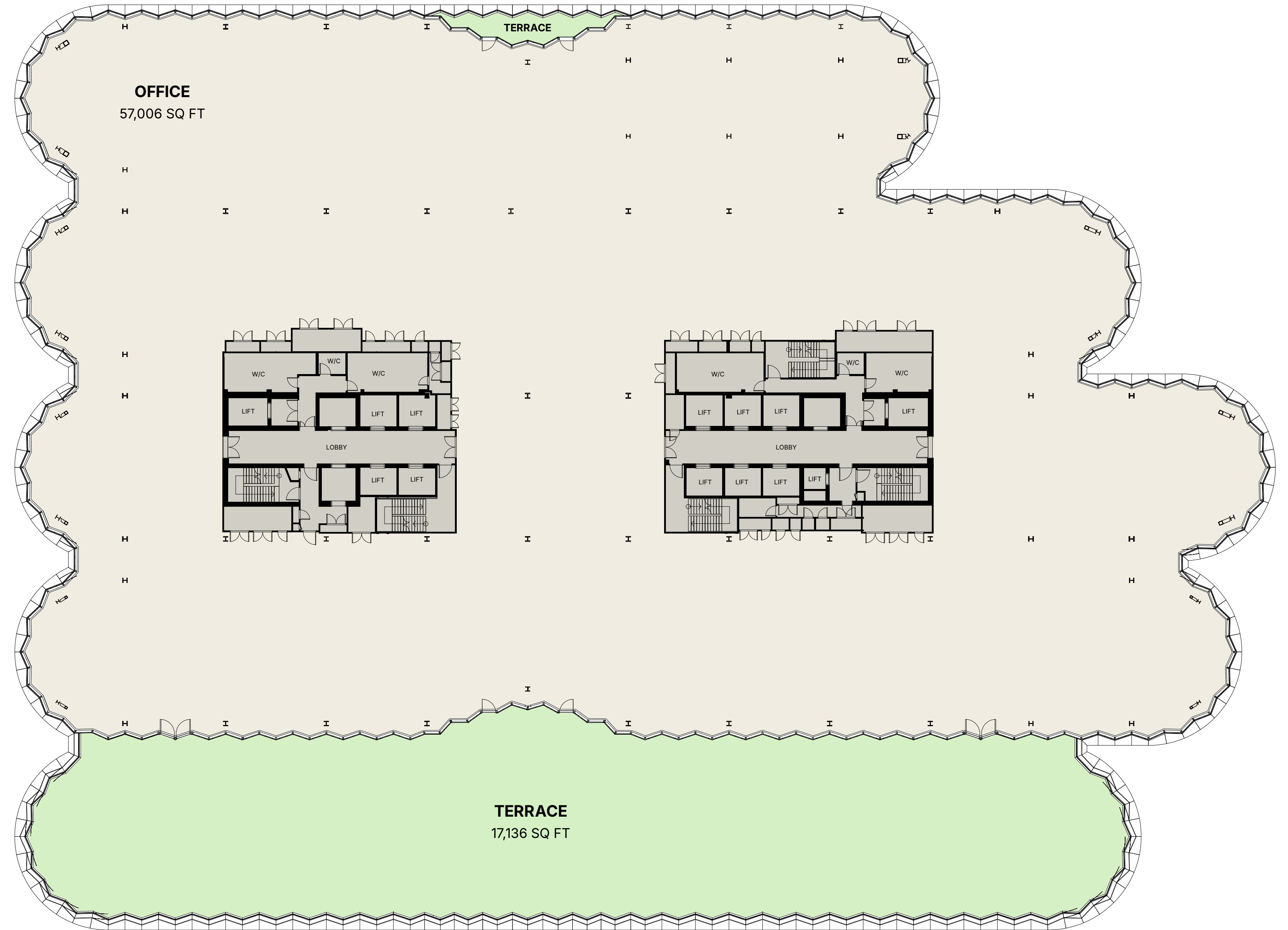
Level 07



ONE OLYMPIA

OFFICE SPACE 57,006 SQ FT

TERRACE 17,136 S FT

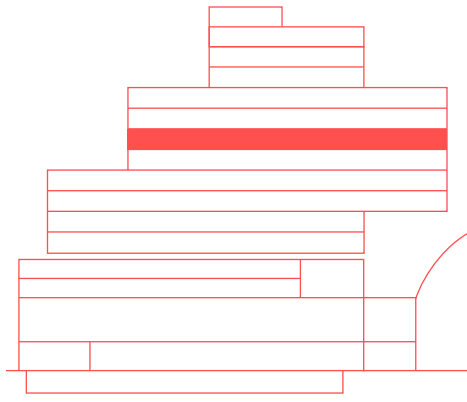


OFFICE

TERRACE



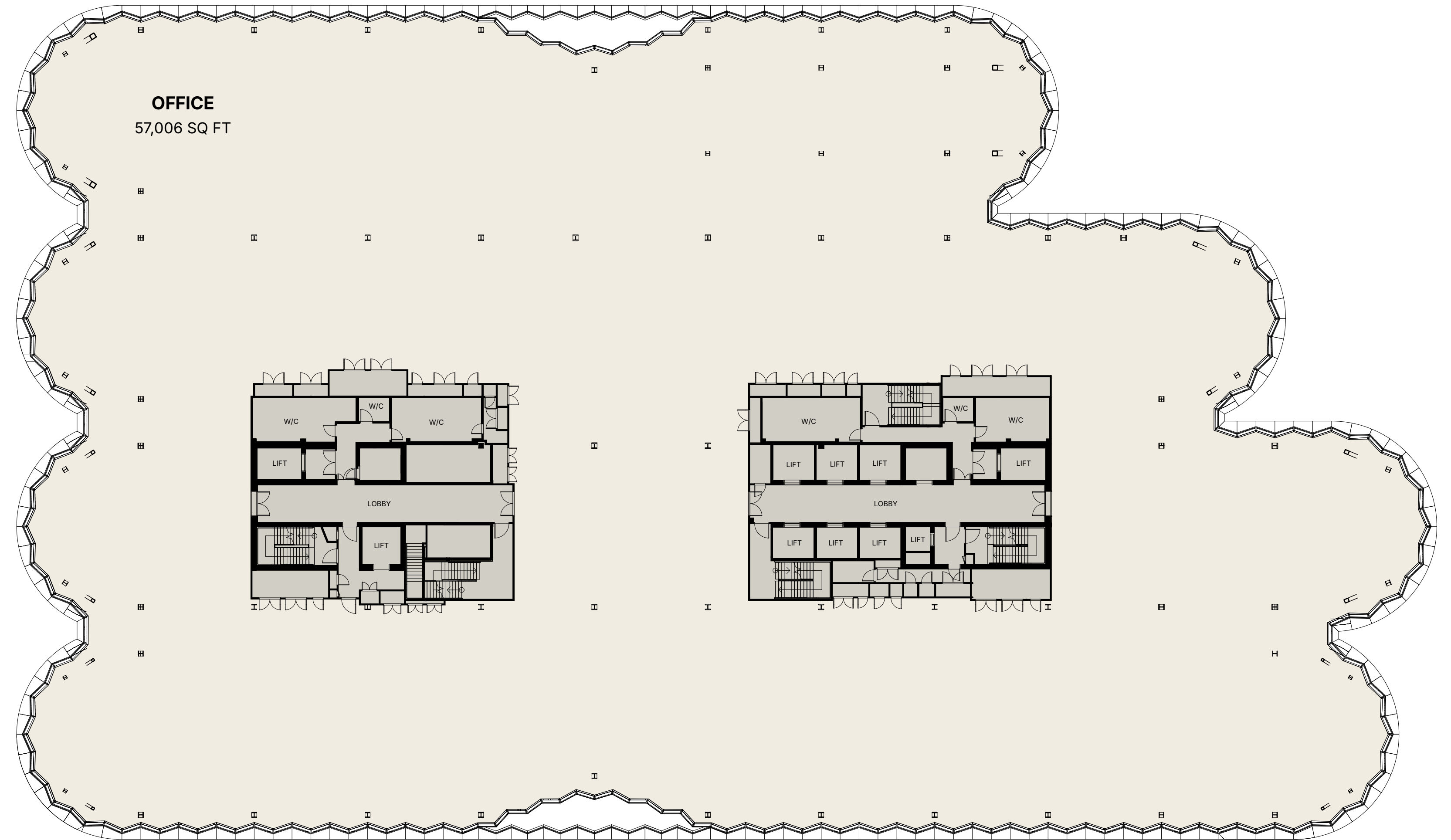
Level 08



ONE OLYMPIA

OFFICE SPACE

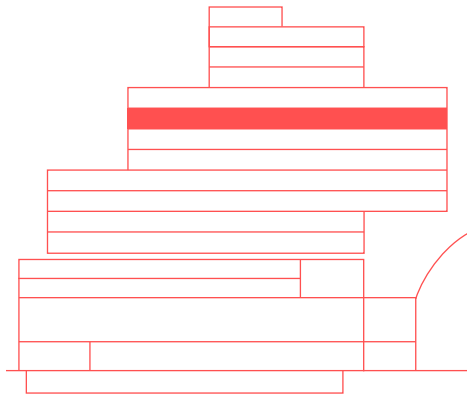
57,006 SQ FT



OFFICE



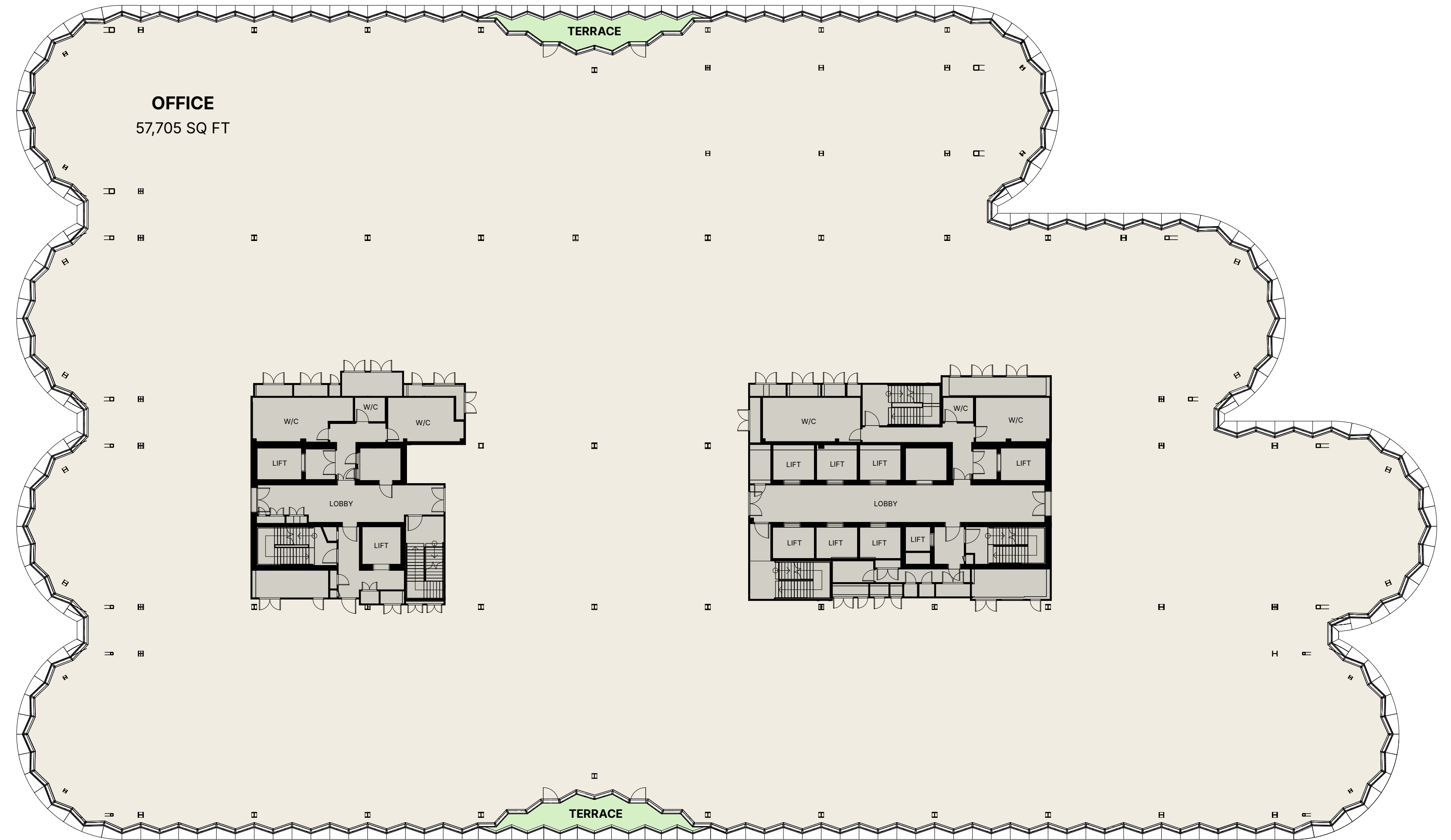
Level 09



ONE OLYMPIA

OFFICE SPACE 57,705 SQ FT

TERRACE 646 SQ FT

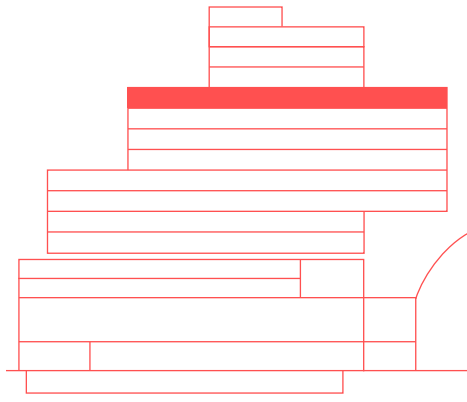


OFFICE

TERRACE



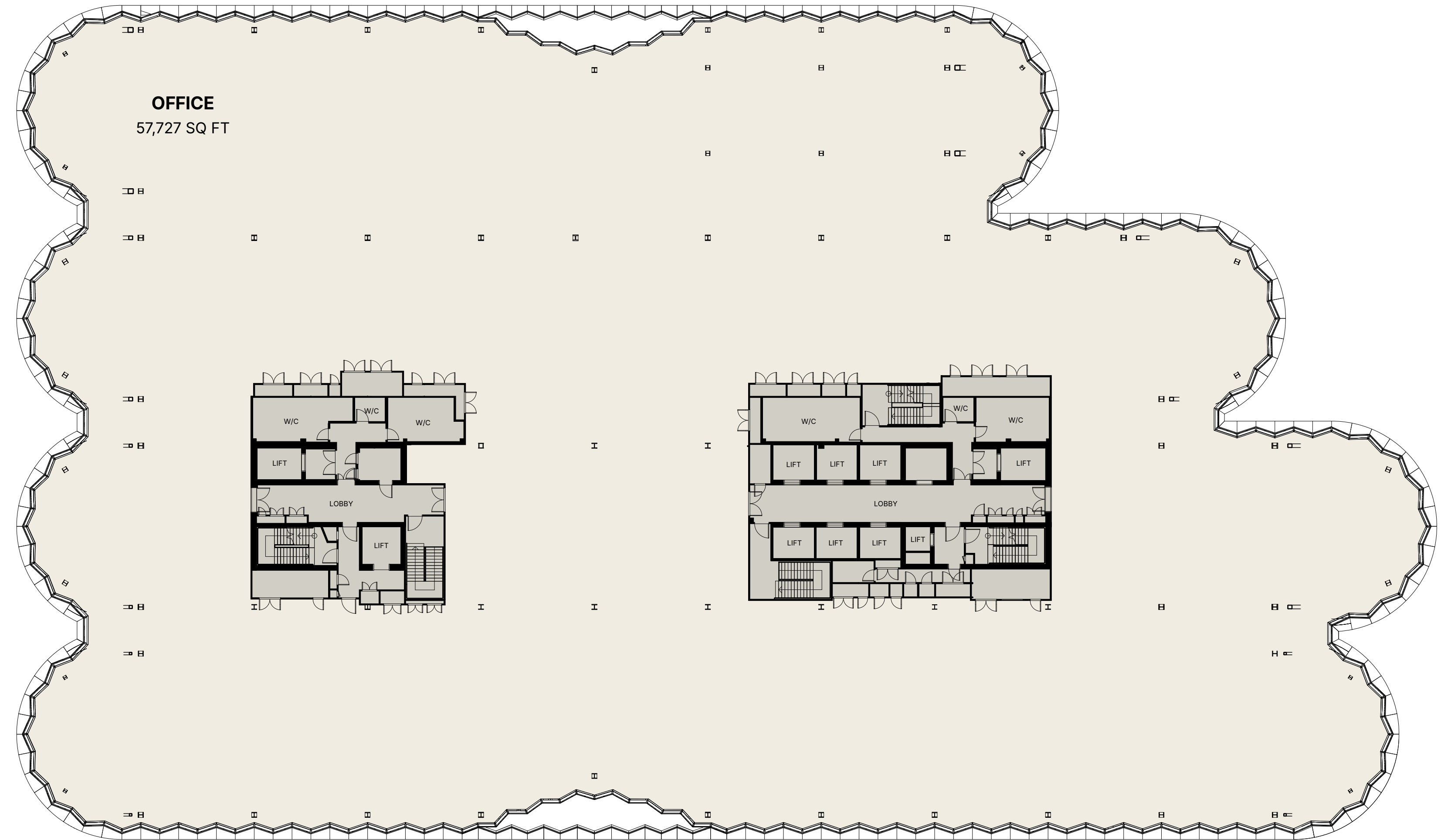
Level 10



ONE OLYMPIA

OFFICE SPACE

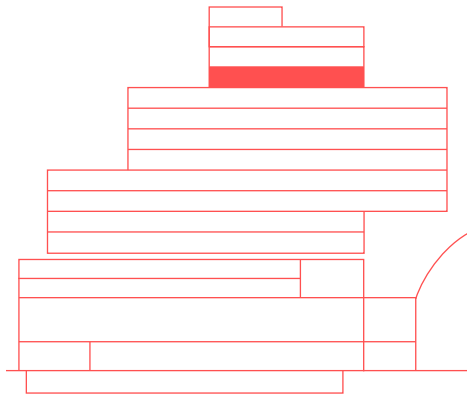
57,727 SQ FT



OFFICE



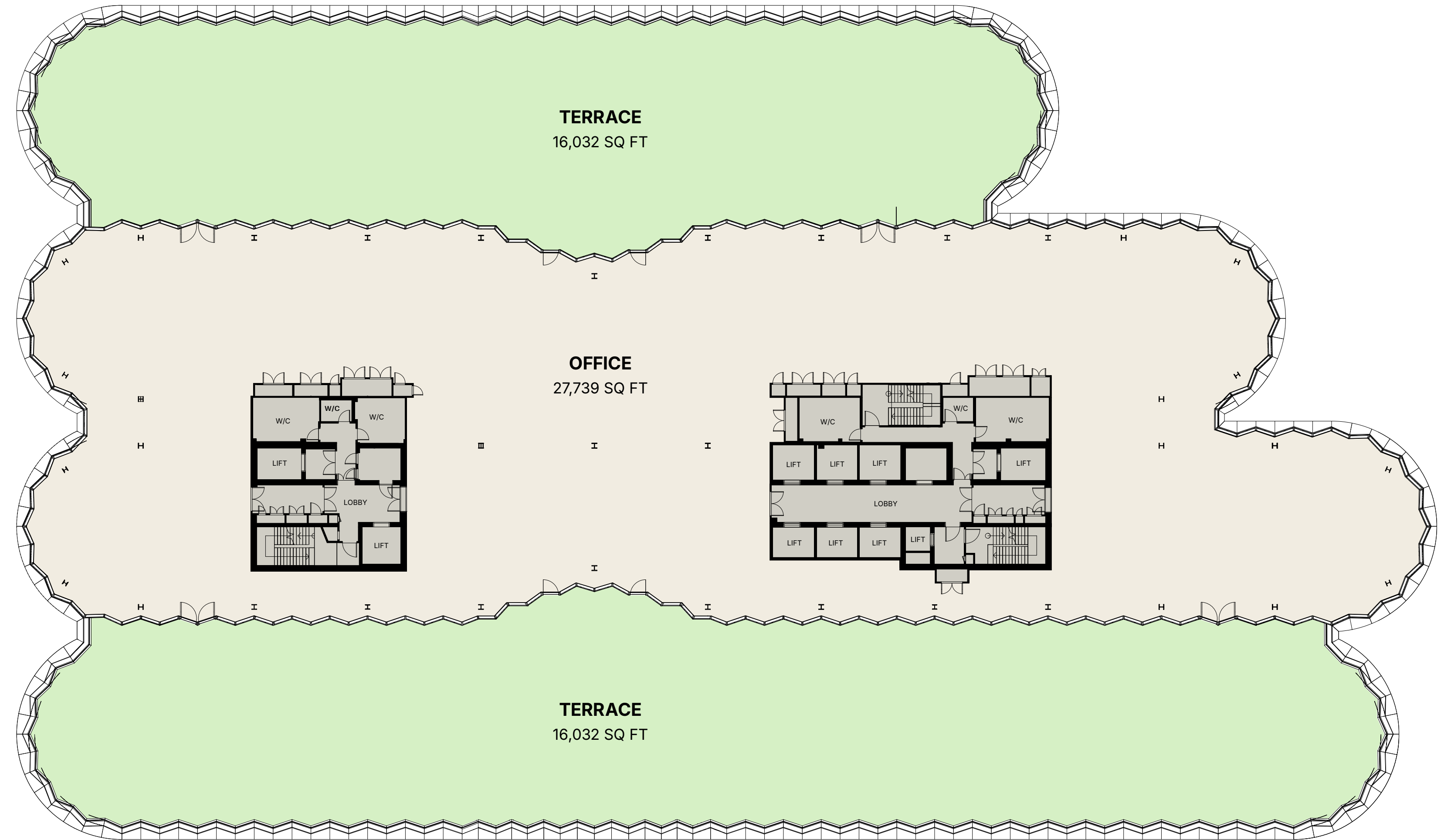
Level 11



ONE OLYMPIA

OFFICE SPACE 27,739 SQ FT

TERRACE 32,064 SQ FT

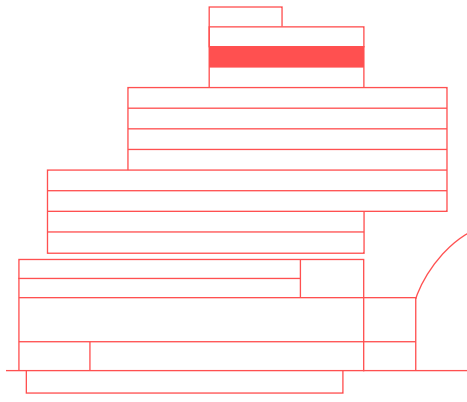


OFFICE

TERRACE



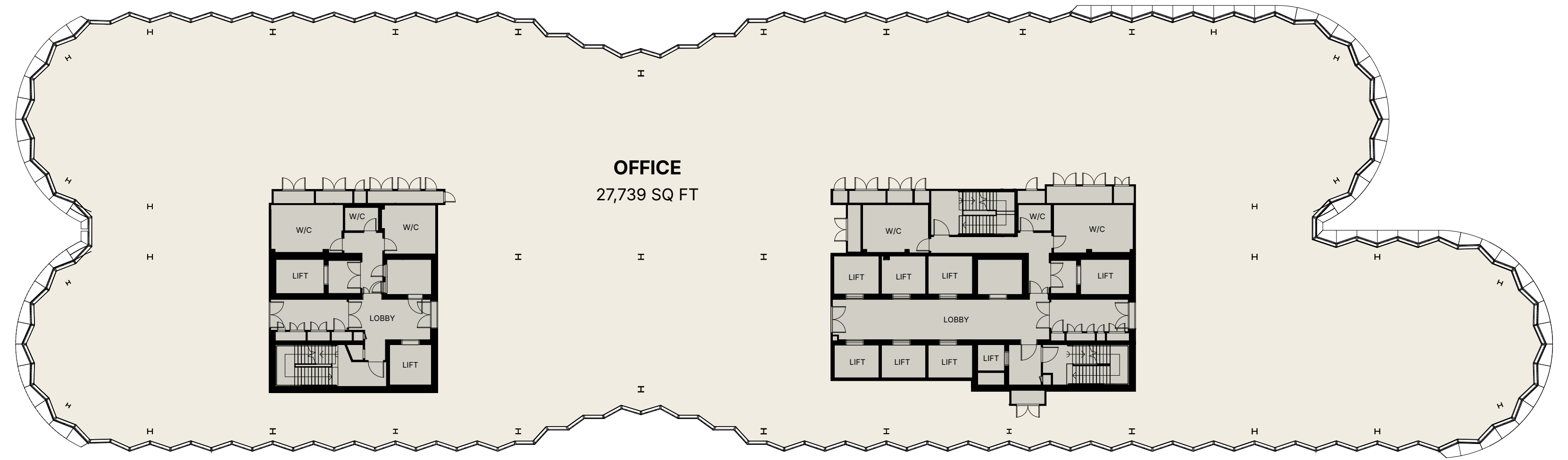
Level 12



ONE OLYMPIA

OFFICE SPACE

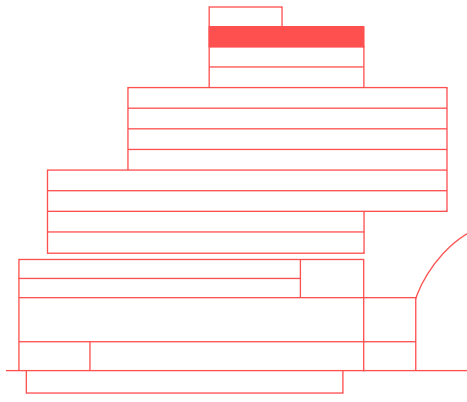
27,739 SQ FT



OFFICE



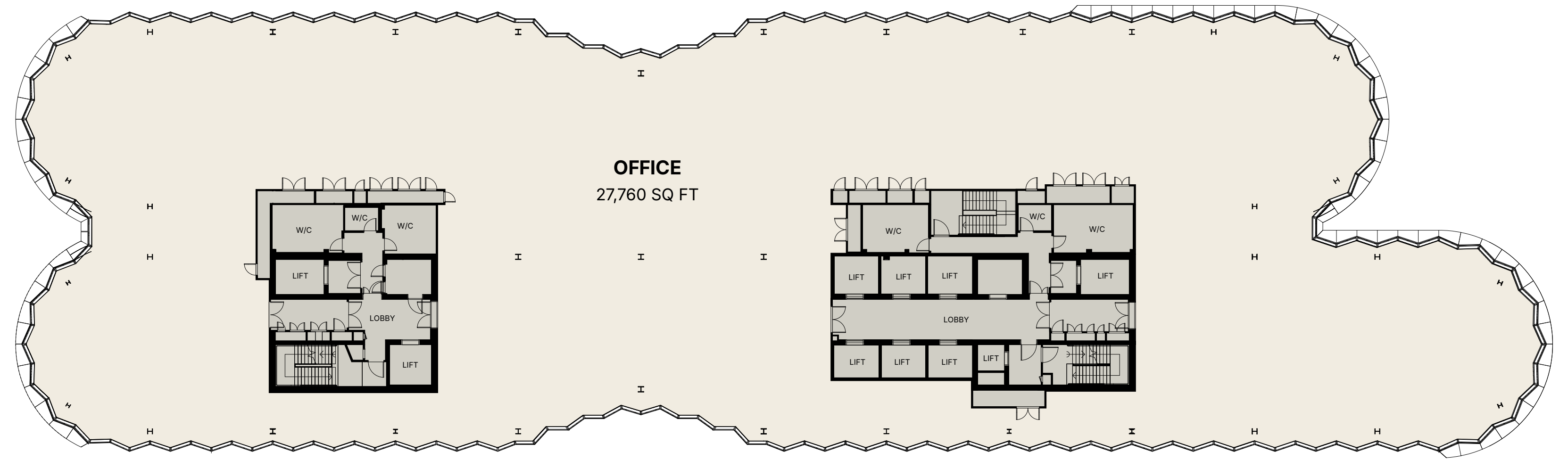
Level 13



ONE OLYMPIA

OFFICE SPACE

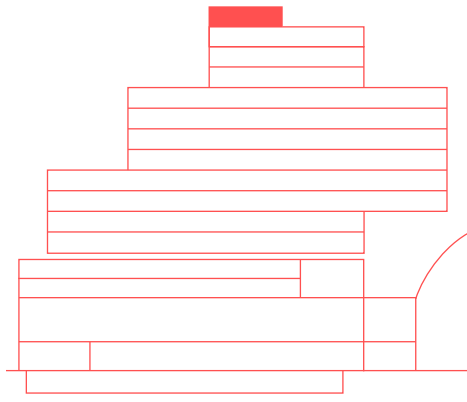
27,760 SQ FT



OFFICE



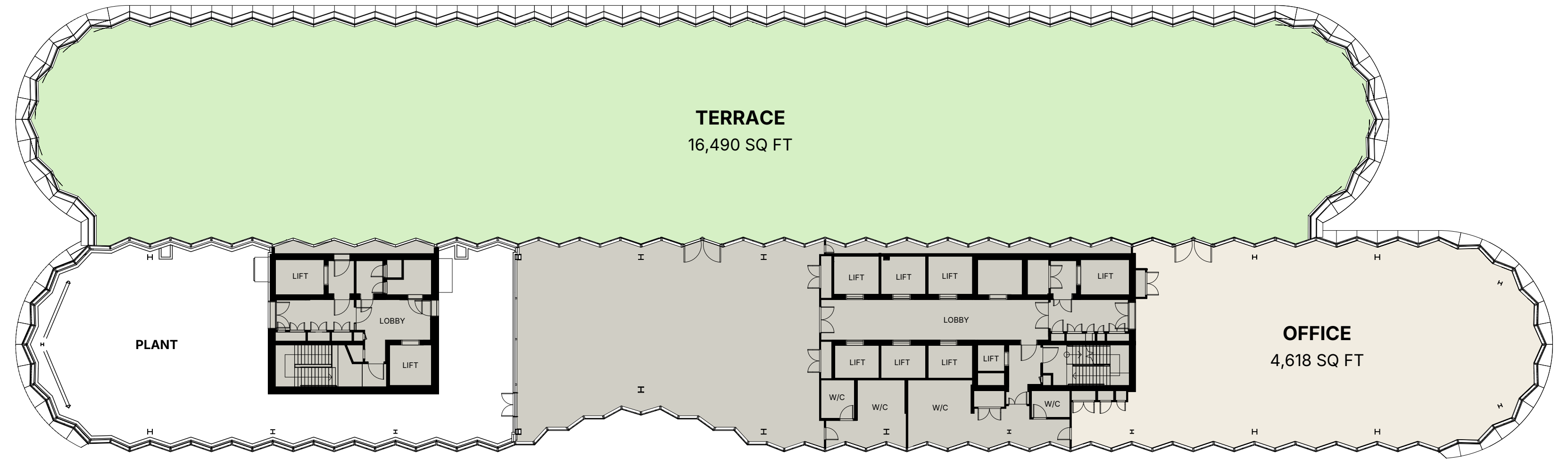
Level 14



ONE OLYMPIA

OFFICE SPACE 4,618 SQ FT

TERRACE 16,490 SQ FT



OFFICE

TERRACE





ONE
OLYMPIA